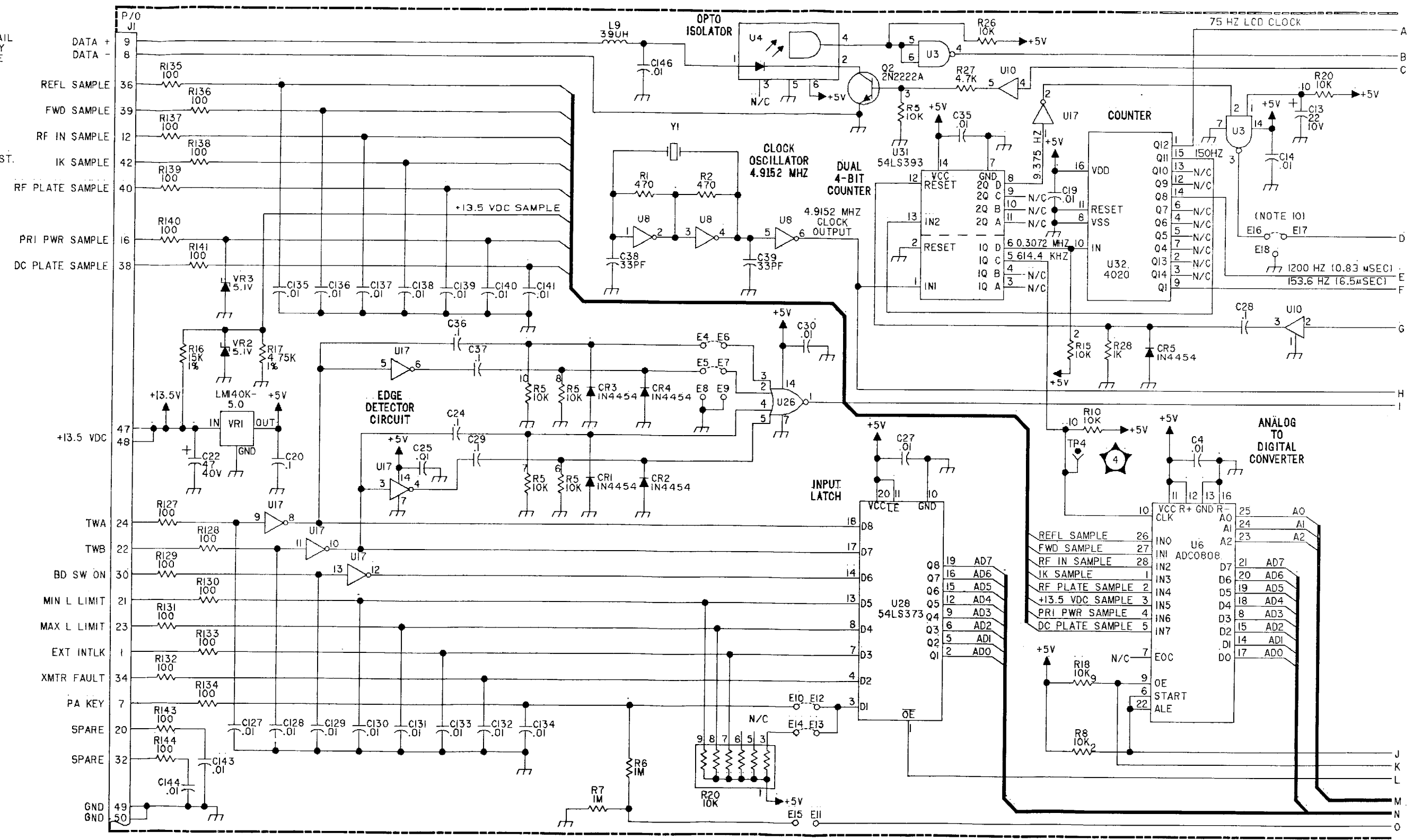
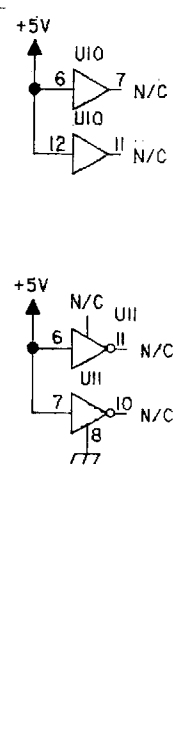


NOTE: UNLESS OTHERWISE SPECIFIED:

- PARTIAL REFERENCE DESIGNATIONS ARE SHOWN FOR DETAIL PARTS. PREFIX THESE WITH UNIT NO. AND/OR ASSEMBLY DESIGNATIONS SHOWN ON DRAWING TO OBTAIN COMPLETE DESIGNATIONS.
- ALL RESISTOR VALUES ARE IN OHMS, 1/4W, ±5%.
- ALL CAPACITOR VALUES ARE IN MICROFARADS (UF).
- ALL INDUCTANCE VALUES ARE IN MILLIHENRIES (MH).
- VENDOR PART NO. CALLOUTS ARE FOR REFERENCE ONLY. COMPONENTS ARE SUPPLIED PER PART NO. IN PARTS LIST.
- DC RESISTANCES OF INDUCTIVE ELEMENTS (CHOKES, COILS, MOTOR WINDINGS, ETC.) ARE LESS THAN 1 OHM.
- PANEL DECALS ARE INDICATED BY BOLD TYPE IN A BOLD BOX, E.G., **ON/OFF**
- ALL RELAYS ARE SHOWN IN THE DE-ENERGIZED STATE.

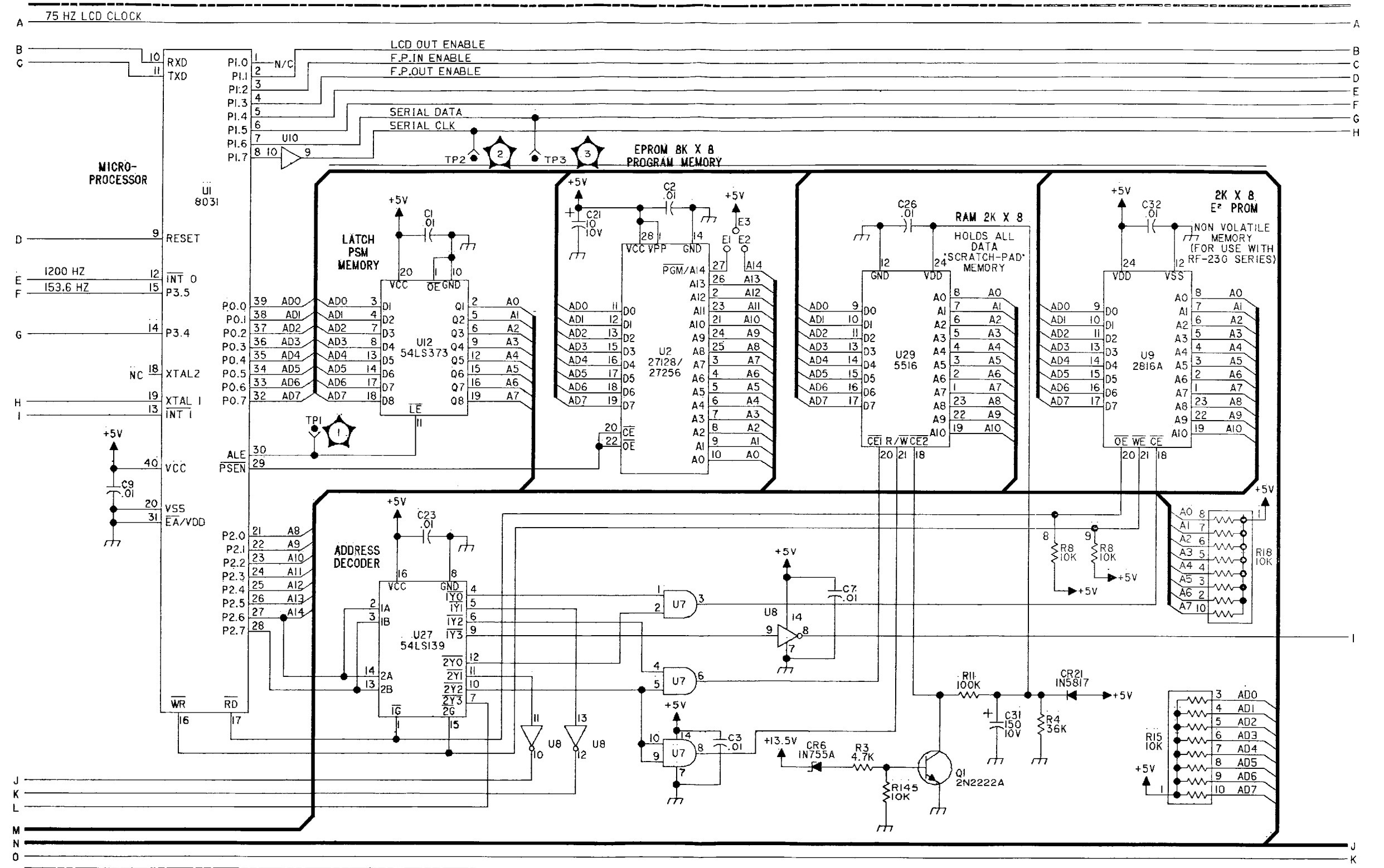
HIGHEST REFERENCE DESIGNATION	
REFERENCE DESIGNATIONS NOT USED	

UNUSED GATES



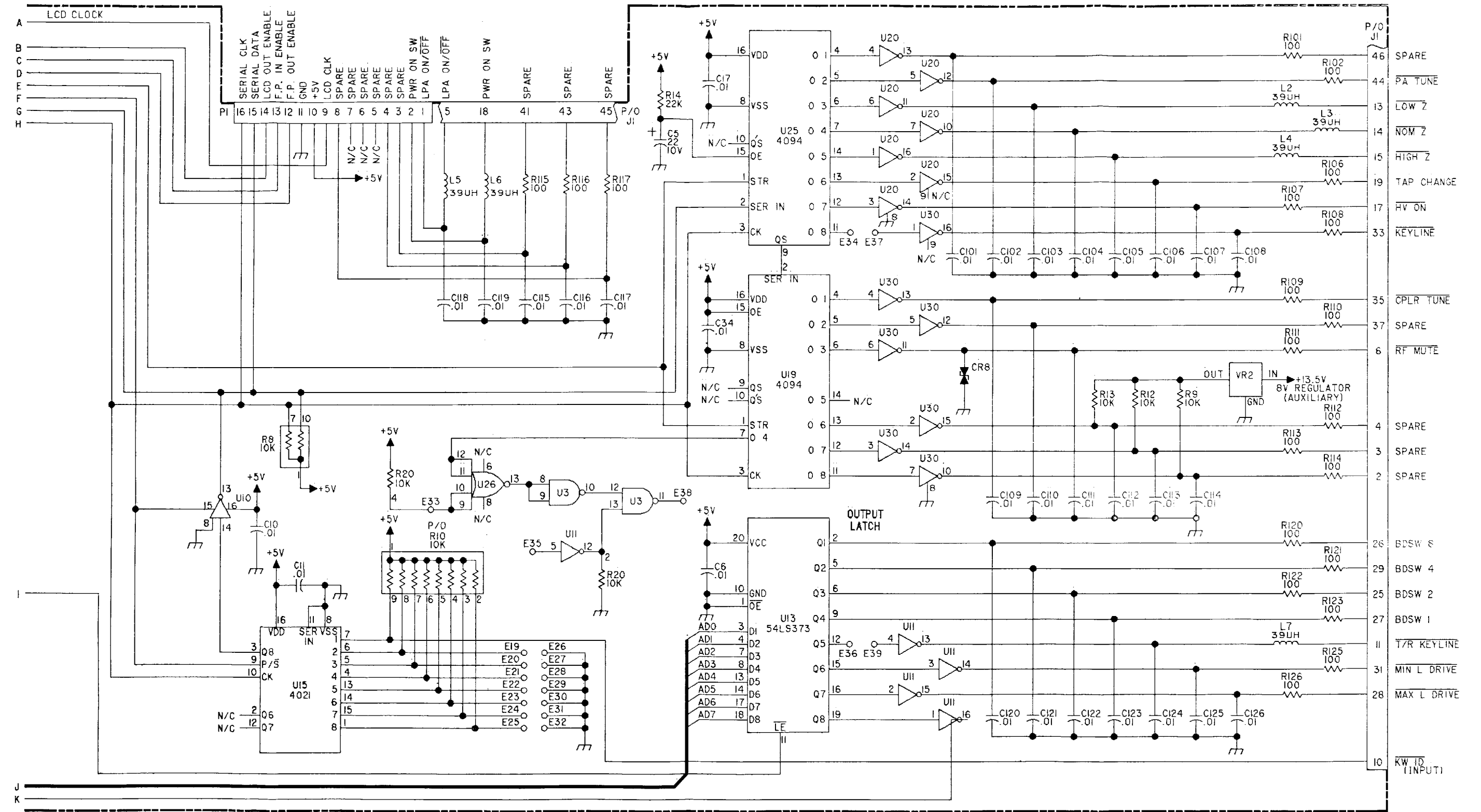
FO-9. Micro Control PWB Assy, A6 (Sheet 1 of 3)





FO-9. Micro Control PWB Assy, A6  
(Sheet 2 of 3)





FO-9. Micro Control PWB Assy, A6  
(Sheet 3 of 3)

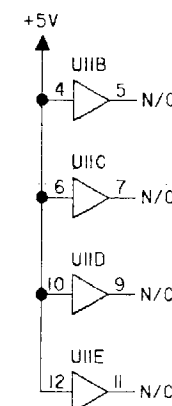


NOTE: UNLESS OTHERWISE SPECIFIED:

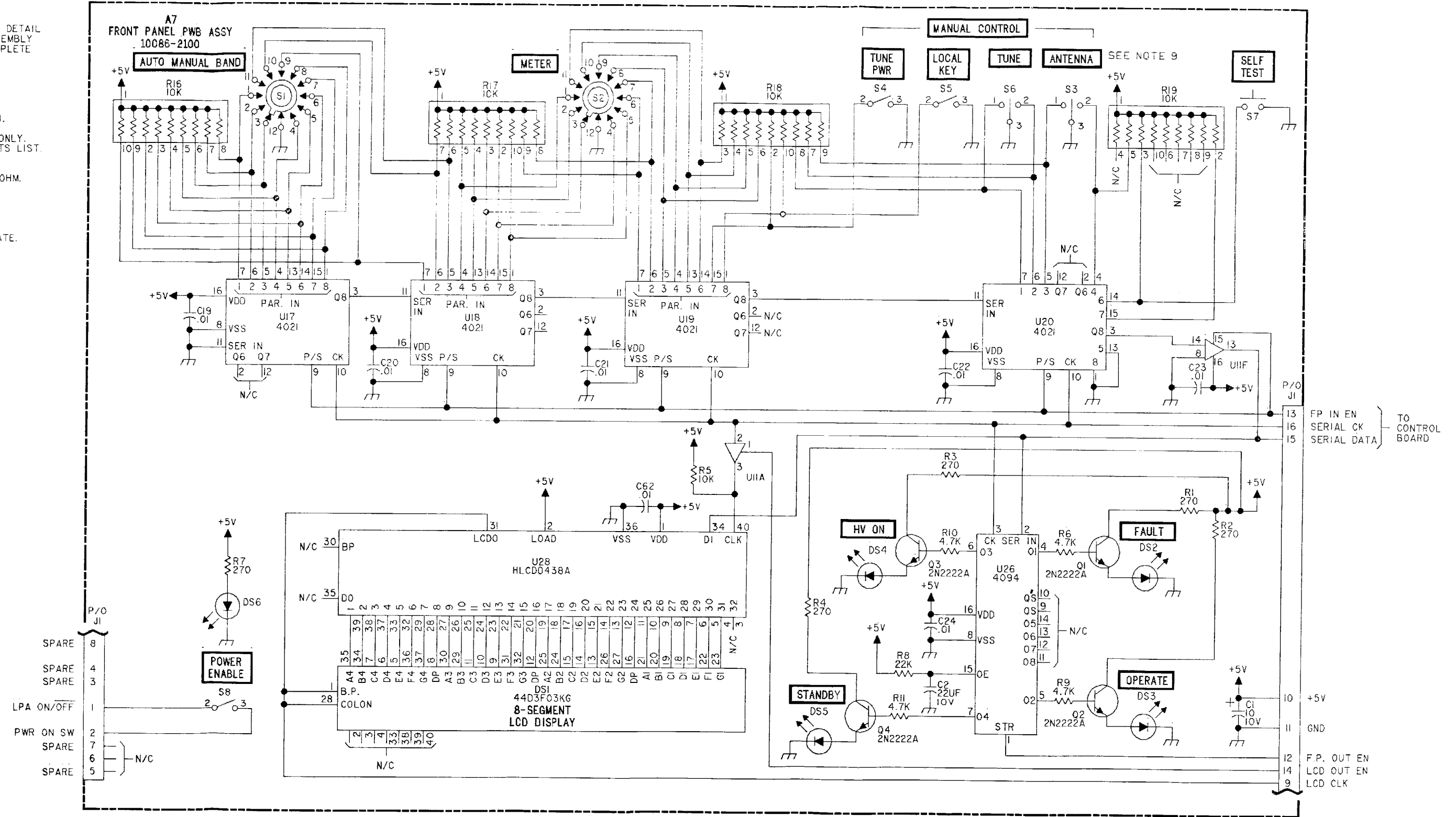
1. PARTIAL REFERENCE DESIGNATIONS ARE SHOWN FOR DETAIL PARTS. PREFIX THESE WITH UNIT NO. AND/OR ASSEMBLY DESIGNATIONS SHOWN ON DRAWING TO OBTAIN COMPLETE DESIGNATIONS.
2. ALL RESISTOR VALUES ARE IN OHMS, 1/4W, ±5%.
3. ALL CAPACITOR VALUES ARE IN MICROFARADS (UF).
4. ALL INDUCTANCE VALUES ARE IN MILLIHENRIES (MH).
5. VENDOR PART NO. CALLOUTS ARE FOR REFERENCE ONLY. COMPONENTS ARE SUPPLIED PER PART NO. IN PARTS LIST.
6. DC RESISTANCES OF INDUCTIVE ELEMENTS (CHOKES, COILS, MOTOR WINDINGS, ETC.) ARE LESS THAN 1 OHM.
7. PANEL DECALS ARE INDICATED BY BOLD TYPE IN A BOLD BOX, E.G., **ON/OFF**.
8. ALL RELAYS ARE SHOWN IN THE DE-ENERGIZED STATE.

HIGHEST REFERENCE DESIGNATION				
C62	CR5	DS1	J1	Q4
R19	S9	U28		
REFERENCE DESIGNATIONS NOT USED				
C2-18	C25-61	R8	R13-15	U1-10
U12-16	U21-25	U27		

UNUSED GATES



9. **ANTENNA** SWITCH IS NOT USED ON 10086-2100 ASSY. IT IS PRESENT ON 10087-2100.



FO-10. Front Panel PWB Assy, A7A1






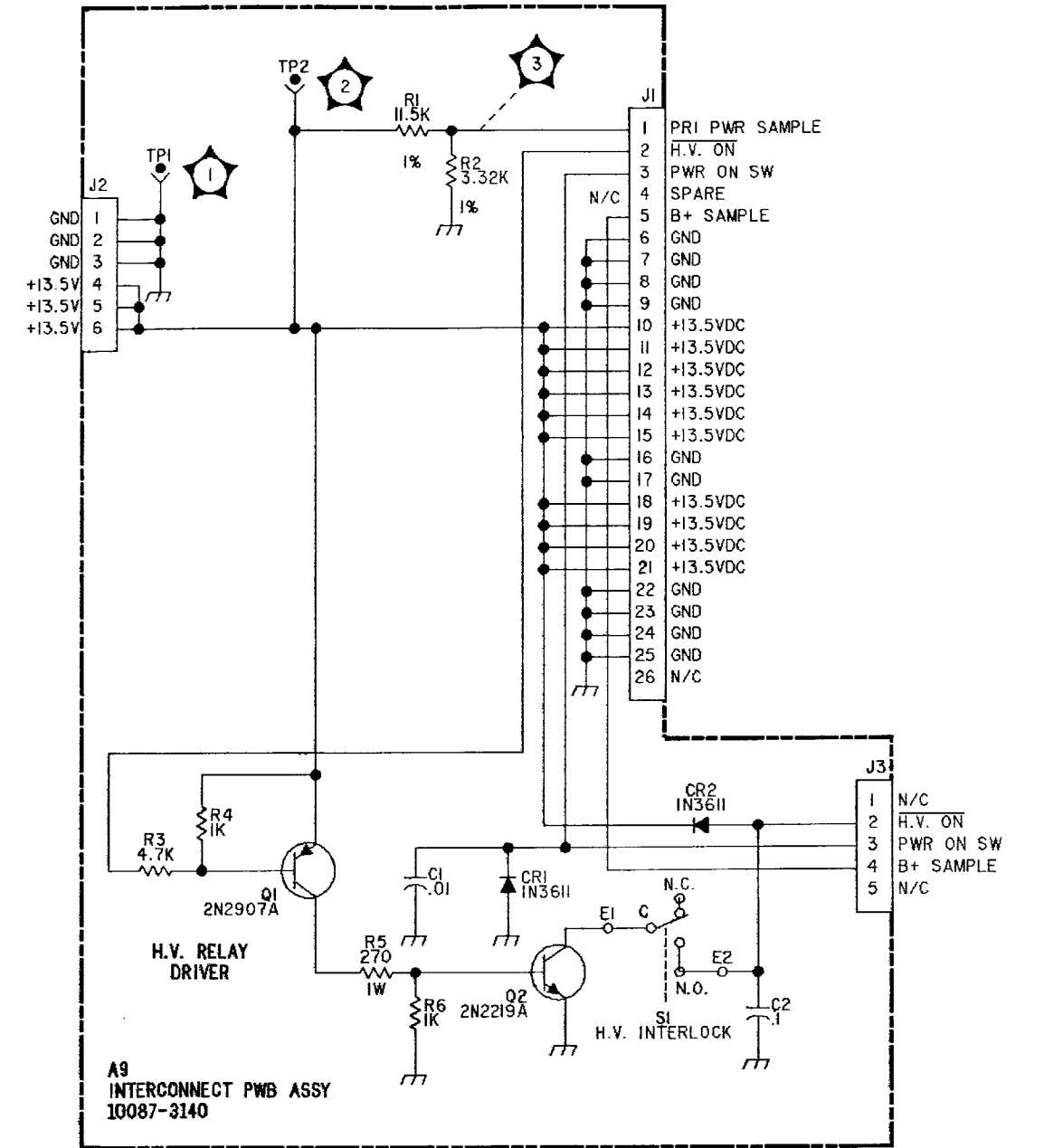


NOTE: UNLESS OTHERWISE SPECIFIED:

- PARTIAL REFERENCE DESIGNATIONS ARE SHOWN FOR DETAIL PARTS. PREFIX THESE WITH UNIT NO. AND/OR ASSEMBLY DESIGNATIONS SHOWN ON DRAWING TO OBTAIN COMPLETE DESIGNATIONS.
- ALL RESISTOR VALUES ARE IN OHMS, 1/4W, ±5%.
- ALL CAPACITOR VALUES ARE IN MICROFARADS (UF).
- ALL INDUCTANCE VALUES ARE IN MILLIHENRIES (MH).
- VENDOR PART NO. CALLOUTS ARE FOR REFERENCE ONLY. COMPONENTS ARE SUPPLIED PER PART NO. IN PARTS LIST.
- DC RESISTANCES OF INDUCTIVE ELEMENTS (CHOKES, COILS, MOTOR WINDINGS, ETC.) ARE LESS THAN 1 OHM.
- PANEL DECALS ARE INDICATED BY BOLD TYPE IN A BOLD BOX, E.G., **ON/OFF**
- ALL RELAYS ARE SHOWN IN THE DE-ENERGIZED STATE.

HIGHEST REFERENCE DESIGNATION			
J3	Q2	R6	TP2
REFERENCE DESIGNATIONS NOT USED			

-  0V
-  13.5V
-  3.0V ≡ 13.5V



FO-11. Interconnect PWB Assy, A9

